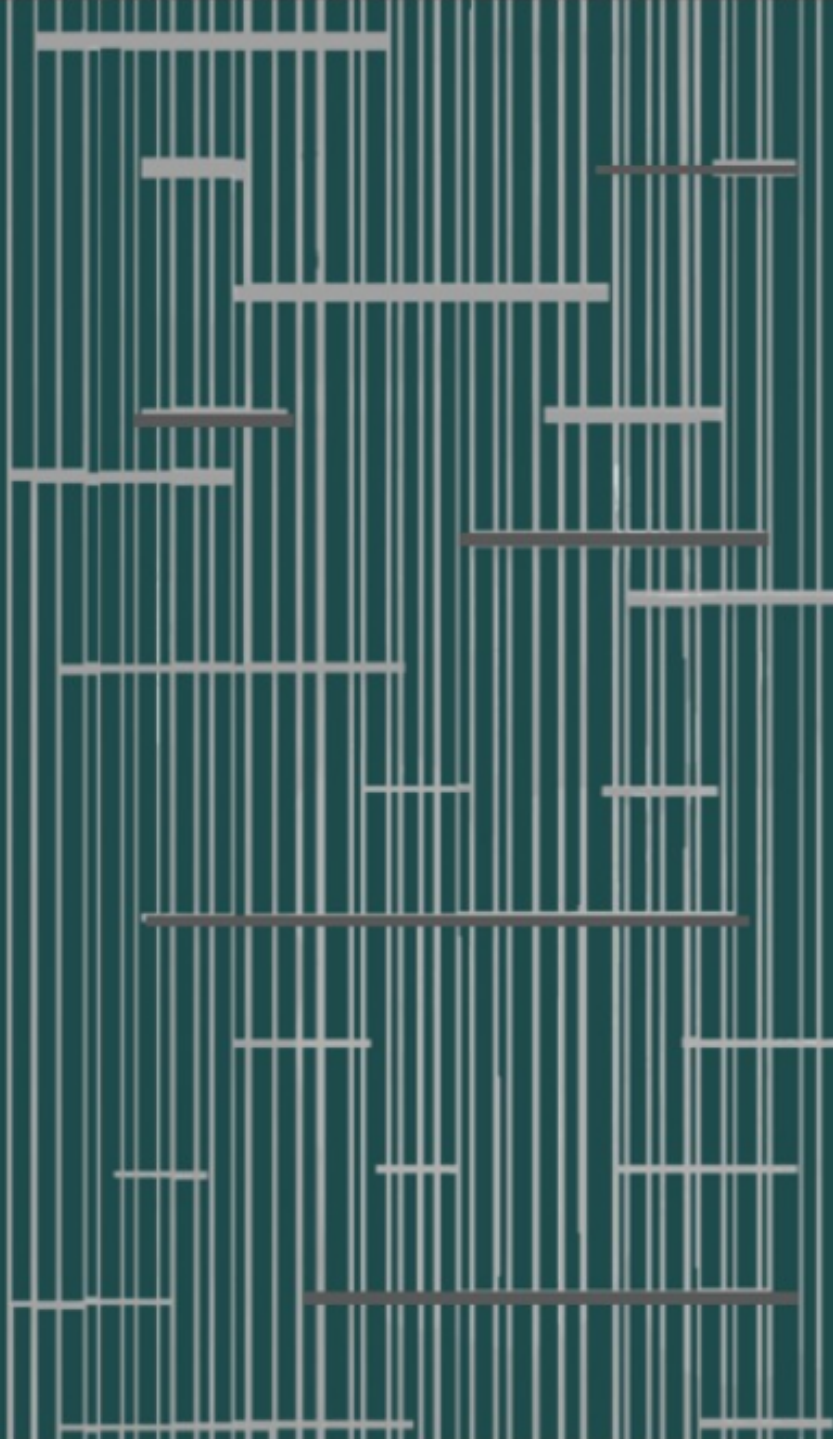


CHUAN PARK

鑫丰瑞府



a. SITE INTRODUCTION

- Development Data
- Views
- Connectivity
- Amenities

b. ARCHITECTURAL & LANDSCAPE DESIGN

c. LAYOUT & UNIT DISTRIBUTION

- Selling Points
- Unit Distribution Chart
- Floor Plans

d. COMMON FACILITIES

e. UNIT INTERIOR CONCEPT

- Kitchen Design
- Wardrobe Design
- Smart Features

f. SHOW UNIT CONCEPT

- Storey Board for Type B2a
- Storey Board for Type C3b
- Storey Board for Type E1

CHUAN PARK

SITE INTRODUCTION

CHUAN PARK

Development Data



PLANNING PARAMETERS

site area	: 37,215 sqm
plot ratio	: 2.1
max. AMSL	: 70m (blk 248 & 250)
	: 80m (blk 242, 244 & 246)
GFA	: 78,152 sqm

DEVELOPMENT FIGURES

no. of units	: 916
no. of blocks	: 5
no. of storeys	: 19 (blk 248 & 250)
	: 22 (blk 242, 244 & 246)
typical floor to floor height	: 2.975m
car parking	: 734 lots + 6 accessible lots

Development planning was submitted before GFA harmonization.
Area includes AC ledges and balcony. RC ledges and voids are excluded from the strata area.

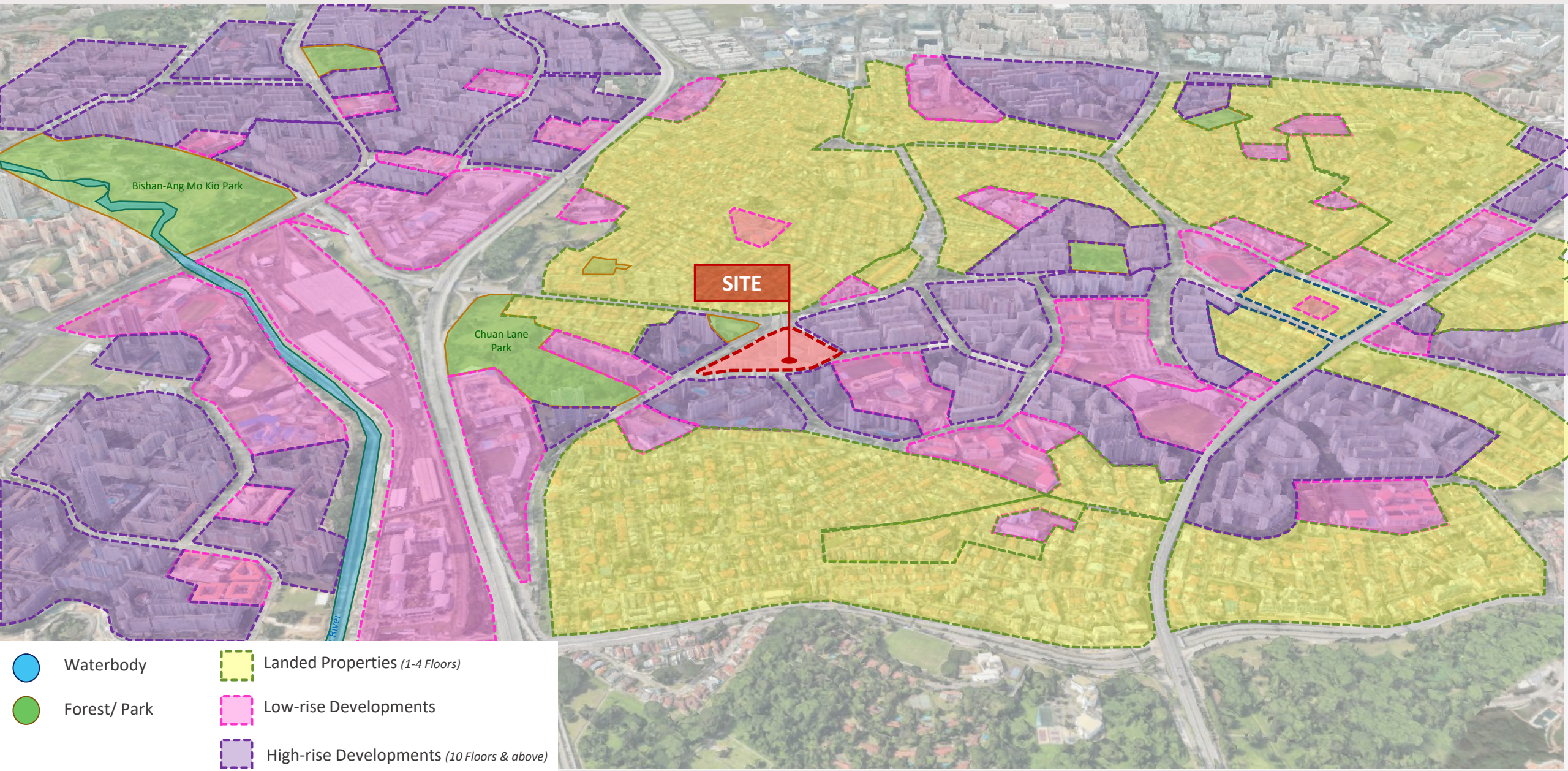
CHUAN PARK

Site Location



CHUAN PARK

Neighboring Building Heights



CHUAN PARK Site Views



VIEW 1

Northern View towards landed properties around Serangoon Garden



VIEW 2

*Southern View towards Potong Pasir, National Stadium & Marina Bay area
(From 19th floor onwards)*



VIEW 1

SITE

VIEW 2

VIEW 3



VIEW 3

South-Eastern View towards Bartley & Bidadari Park

CHUAN PARK

Site Connectivity - Vehicular



CHUAN PARK

Site Connectivity – MRT Network



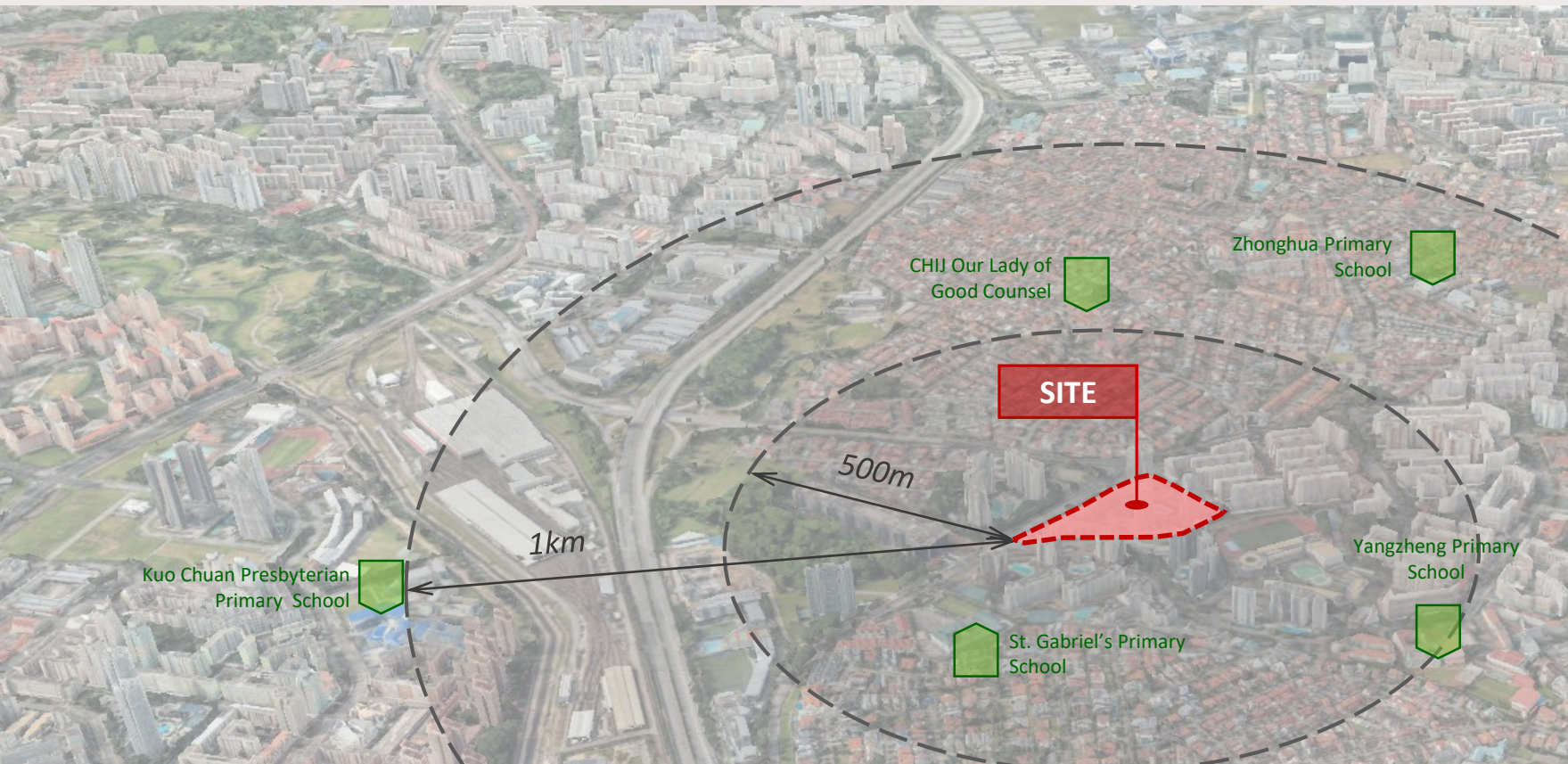
CHUAN PARK

Site Amenities



CHUAN PARK

Site Amenities – Primary School within 1km



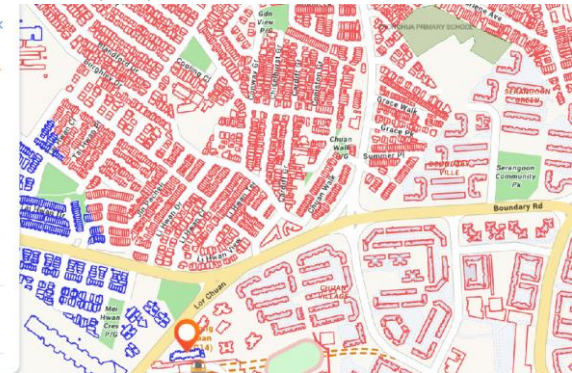
ZHONGHUA PRIMARY SCHOOL

Within 1km radius: BLOCK 244, 246, 248 & 250

- Primary School**
- Find Schools Near a Building Find Buildings Near a School
- ☐ YEW TEE PRIMARY SCHOOL
 - ☐ YIO CHU KANG PRIMARY SCHOOL
 - ☐ YISHUN PRIMARY SCHOOL
 - ☐ YU NENG PRIMARY SCHOOL
 - ☐ YUHUA PRIMARY SCHOOL
 - ☐ YUMIN PRIMARY SCHOOL
 - ☐ ZHANGDE PRIMARY SCHOOL
 - ☐ ZHENGHUA PRIMARY SCHOOL
 - ☒ ZHONGHUA PRIMARY SCHOOL

Legend

Within 1km
Between 1 - 2km



CHIJ OUR LADY OF GOOD COUNSEL

Within 1km radius: BLOCK 242, 244, 246, 248 & 250

- Primary School**
- Find Schools Near a Building Find Buildings Near a School
- ☐ CASUARINA PRIMARY SCHOOL
 - ☐ CATHOLIC HIGH SCHOOL
 - ☐ CEDAR PRIMARY SCHOOL
 - ☐ CHANGKAT PRIMARY SCHOOL
 - ☐ CHIJ (KATONG) PRIMARY
 - ☐ CHIJ (KELLOCK)
 - ☒ CHIJ OUR LADY OF GOOD COUNSEL
 - ☐ CHIJ OUR LADY OF THE NATIVITY
 - ☐ CHIJ OUR LADY QUEEN OF PEACE

Legend

Within 1km
Between 1 - 2km



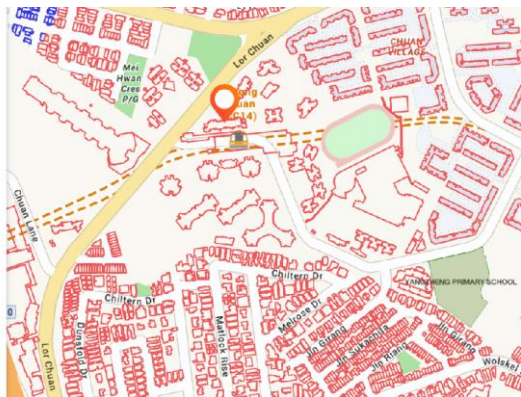
YANGZHENH PRIMARY SCHOOL

Within 1km radius: BLOCK 242, 244, 246, 248 & 250

- Primary School**
- Find Schools Near a Building Find Buildings Near a School
- ☐ XINMIN PRIMARY SCHOOL
 - ☐ XISHAN PRIMARY SCHOOL
 - ☒ YANGZHENH PRIMARY SCHOOL
 - ☐ YEW TEE PRIMARY SCHOOL
 - ☐ YIO CHU KANG PRIMARY SCHOOL
 - ☐ YISHUN PRIMARY SCHOOL
 - ☐ YU NENG PRIMARY SCHOOL
 - ☐ YUHUA PRIMARY SCHOOL
 - ☐ YUMIN PRIMARY SCHOOL
 - ☐ ZHANGDE PRIMARY SCHOOL

Legend

Within 1km
Between 1 - 2km



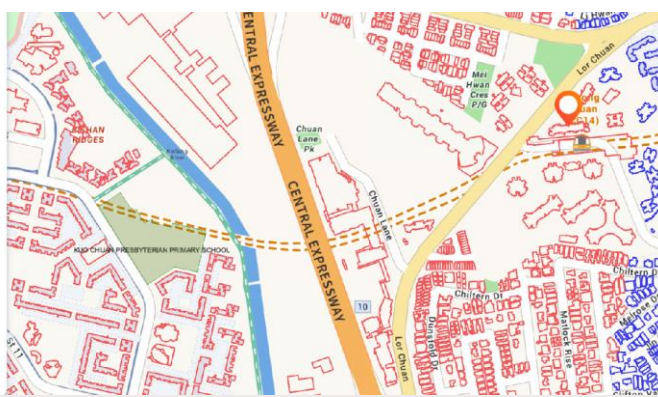
KUO CHUAN PRESTYTERIAN PRIMARY SCHOOL

Within 1km radius: BLOCK 242, 244 & 250

- Primary School**
- Find Schools Near a Building Find Buildings Near a School
- ☐ KHEONG CHENG SCHOOL
 - ☐ KONG HWA SCHOOL
 - ☒ KUO CHUAN PRESTYTERIAN PRIMARY SCHOOL
 - ☐ LAKESIDE PRIMARY SCHOOL
 - ☐ LIANHUA PRIMARY SCHOOL
 - ☐ MAHA BOOHI SCHOOL
 - ☐ MARIS STELLA HIGH SCHOOL
 - ☐ MARSILING PRIMARY SCHOOL
 - ☐ MARYMOUNT CONVENT SCHOOL

Legend

Within 1km
Between 1 - 2km



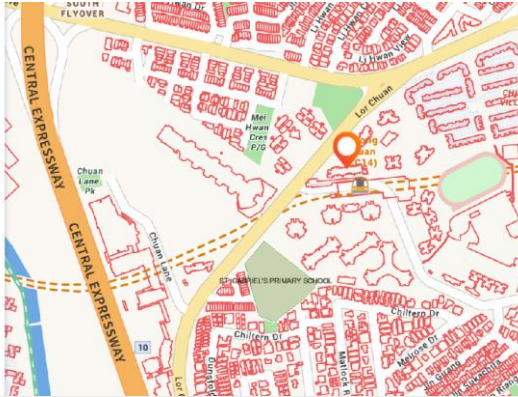
ST. GABRIEL'S PRIMARY SCHOOL

Within 1km radius: BLOCK 242, 244, 246, 248 & 250

- Primary School**
- Find Schools Near a Building Find Buildings Near a School
- ☐ SOUTH VIEW PRIMARY SCHOOL
 - ☐ SPRINGDALE PRIMARY SCHOOL
 - ☐ ST. ANDREW'S JUNIOR SCHOOL
 - ☐ ST. ANTHONY'S CANOSSIAN PRIMARY SCHOOL
 - ☐ ST. ANTHONY'S PRIMARY SCHOOL
 - ☒ ST. GABRIEL'S PRIMARY SCHOOL
 - ☐ ST. HILDA'S PRIMARY SCHOOL
 - ☐ ST. JOSEPH'S INSTITUTION JUNIOR
 - ☐ ST. MARGARET'S SCHOOL (PRIMARY)

Legend

Within 1km
Between 1 - 2km



CHUAN PARK Amenities

NEX



RETAIL & DINING

NEX	1 stop	4-min
Chomp Chomp Food Centre		5-min
myVillage		5-min
Junction 8	1 stop	6-min
The Woodleigh Mall	2 stops	6-min
Heartland Mall Kovan	2 stops	8-min
Velocity@Novena Square	4 stops	9-min

ION ORCHARD



Thomson Plaza		9-min
Hougang Mall	3 stops	10-min
Plaza Singapura	7 stops	10-min
PLQ Mall	5 stops	10-min
ION Orchard	6 stops	11-min
Suntec City	10 stops	12-min

CENTRAL EXPRESSWAY



CONNECTIVITY

Central Expressway	3-min
Pan Island Expressway	8-min
Ang Mo Kio Ave 1	5-min
Braddell Road	5-min
Upper Serangoon Road	9-min
Bishan Bus Interchange	1 stop
Serangoon Bus Interchange	1 stop

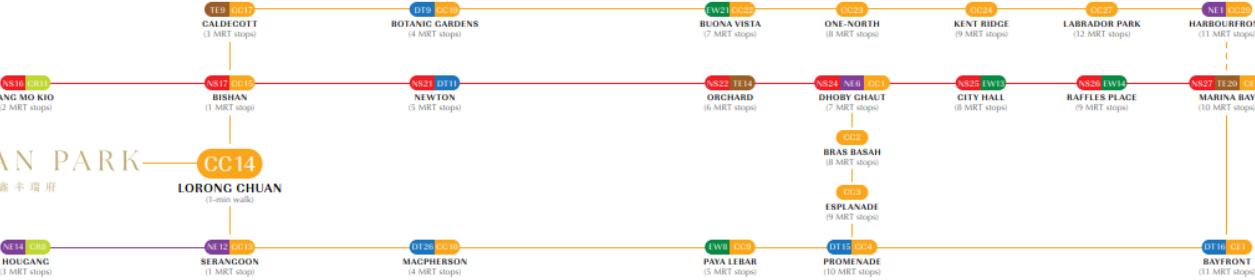
NEW TECH PARK



BUSINESS

New Tech Park	7-min	2-min
Paya Lebar Central	5 stops	10-min
Seletar Aerospace Park		10-min
Raffles Place	9 stops	16-min
Marina Bay Financial Centre	11 stops	16-min

CHUAN PARK 嘉丰瑞府



NANYANG JUNIOR COLLEGE



EDUCATION

Nanyang Junior College	4-min	2-min
St. Gabriel's Pri Sch	5-min	2-min
St. Gabriel's Sec Sch	5-min	2-min
Yangzheng Pri Sch	9-min	2-min
Zhonghua Sec Sch		2-min
Australian Int'l Sch Singapore		3-min

AUSTRALIAN INT'L SCHOOL SINGAPORE



Brighton College (Singapore)	3-min
Peicai Sec Sch	4-min
Kuo Chuan Presbyterian Pri Sch	7-min
St. Andrew's Sec Sch	7-min
Kuo Chuan Presbyterian Sec Sch	8-min
St. Andrew's Junior College	8-min

SINGAPORE BOTANIC GARDENS



LEISURE & NATURE

Serangoon Stadium	5-min
Serangoon Gardens Country Club	6-min
Bidadari Park	7-min
Bishan-Ang Mo Kio Park	7-min
MacRitchie Treetop Walk Trailhead	9-min

MACRITCHIE RESERVOIR



MacRitchie Reservoir		10-min
National Stadium	8 stops	10-min
Singapore Botanic Gardens	4 stops	12-min
Sungei Serangoon Park Connector		15-min

CHUAN PARK

ARCHITECTURAL & LANDSCAPE DESIGN



By the mountain, by the water, a secluded home retreat from the world...

依山傍水房数间，行也安然，坐也安然

"Lorong" is the Malay word for a lane or alley, while "Chuan" means "Fountain" in Hokkien, an auspicious name referring to wealth and prosperity.

“Lorong”源自马来语，意为巷弄；“Chuan”则为泉，源自福建方言，寓意财富与昌盛。

DESIGN INSPIRATION 设计灵感
DERIVING NATURAL LANDSCAPE 效法山水

NEW LIVING ENVIRONMENT **AMONG MOUNTAIN AND WATER** WITH MODERN TOUCH

用现代设计手法打造山水人居空间

MOUNTAIN 山间



WATERFALL 飞瀑



VALLEY 幽谷



STREAM 溪流



LAKE 湖泊



ISLAND 岛屿



DESIGN IMPLEMENTATION 灵感应用
INFUSING NATURAL LANDSCAPE 沉浸山水

NEW LIVING ENVIRONMENT **AMONG MOUNTAIN AND WATER** WITH MODERN TOUCH

用现代设计手法打造山水人居空间

MOUNTAIN 山间



WATERFALL 飞瀑



VALLEY 幽谷



STREAM 溪流



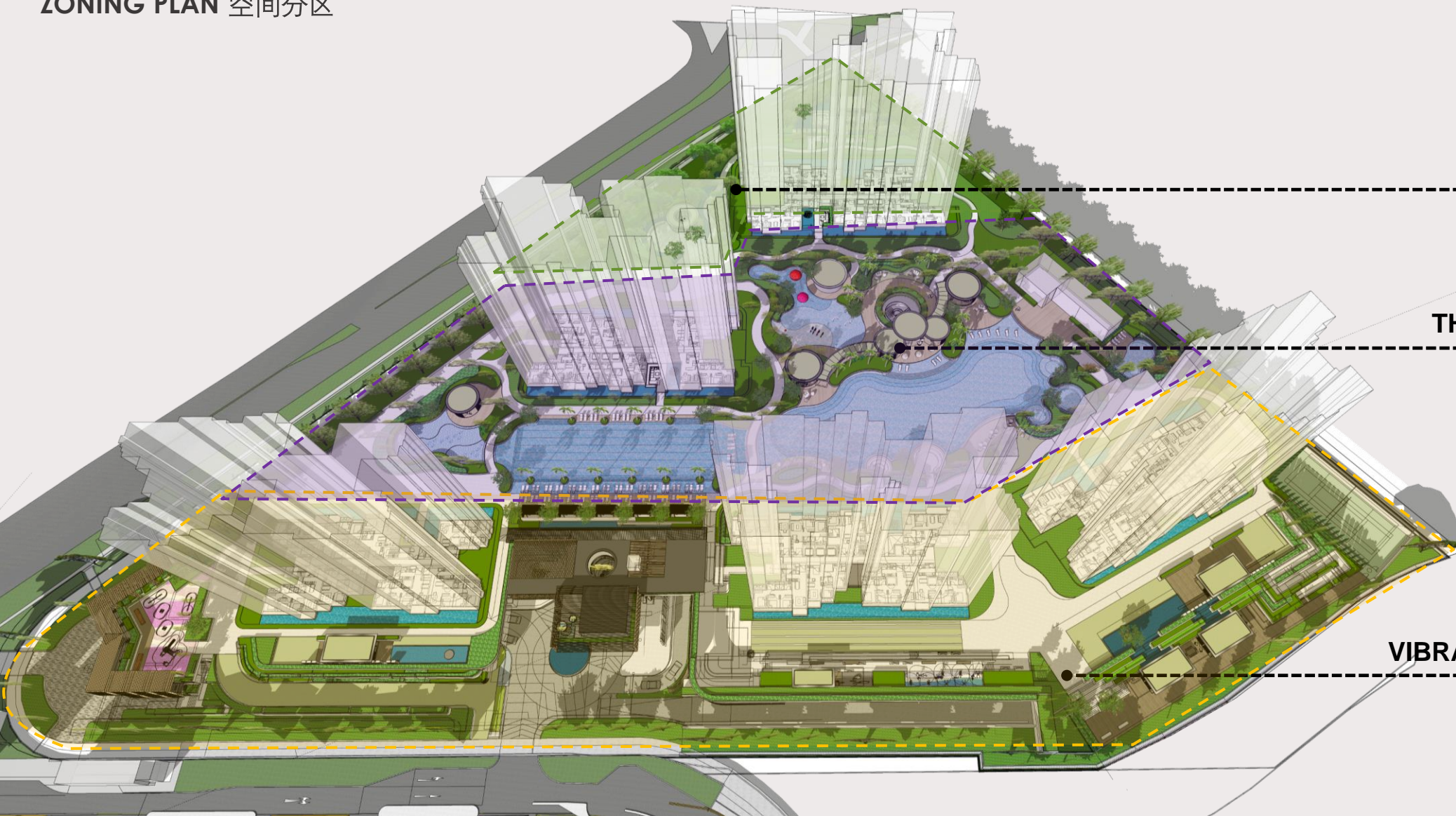
LAKE 湖泊



ISLAND 岛屿



SPATIAL LANDSCAPE 景观空间
ZONING PLAN 空间分区



THE FOREST 山林间

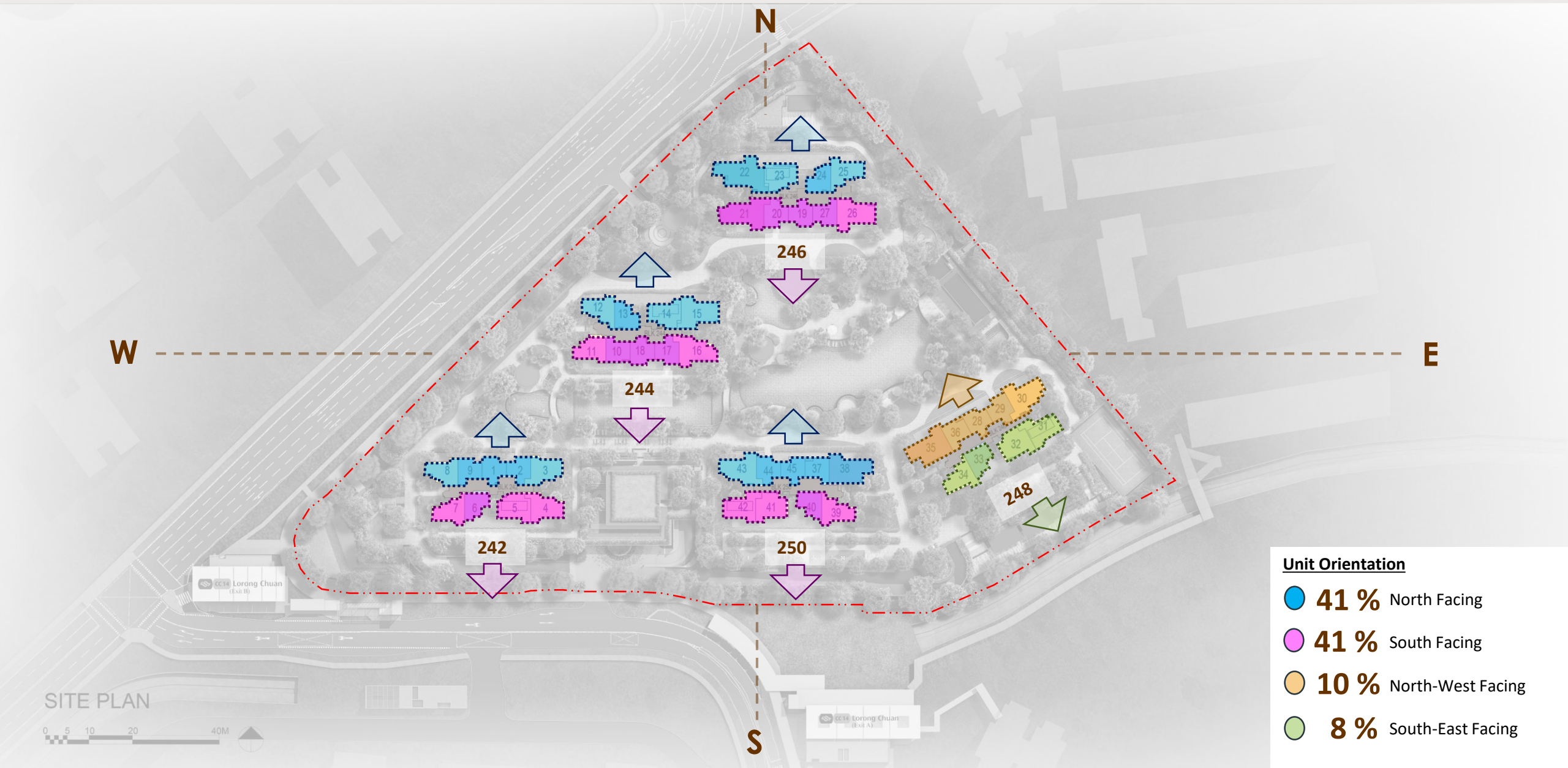
THE WATERFRONT 水云间

VIBRANT COURTYARD 庭院间

CHUAN PARK

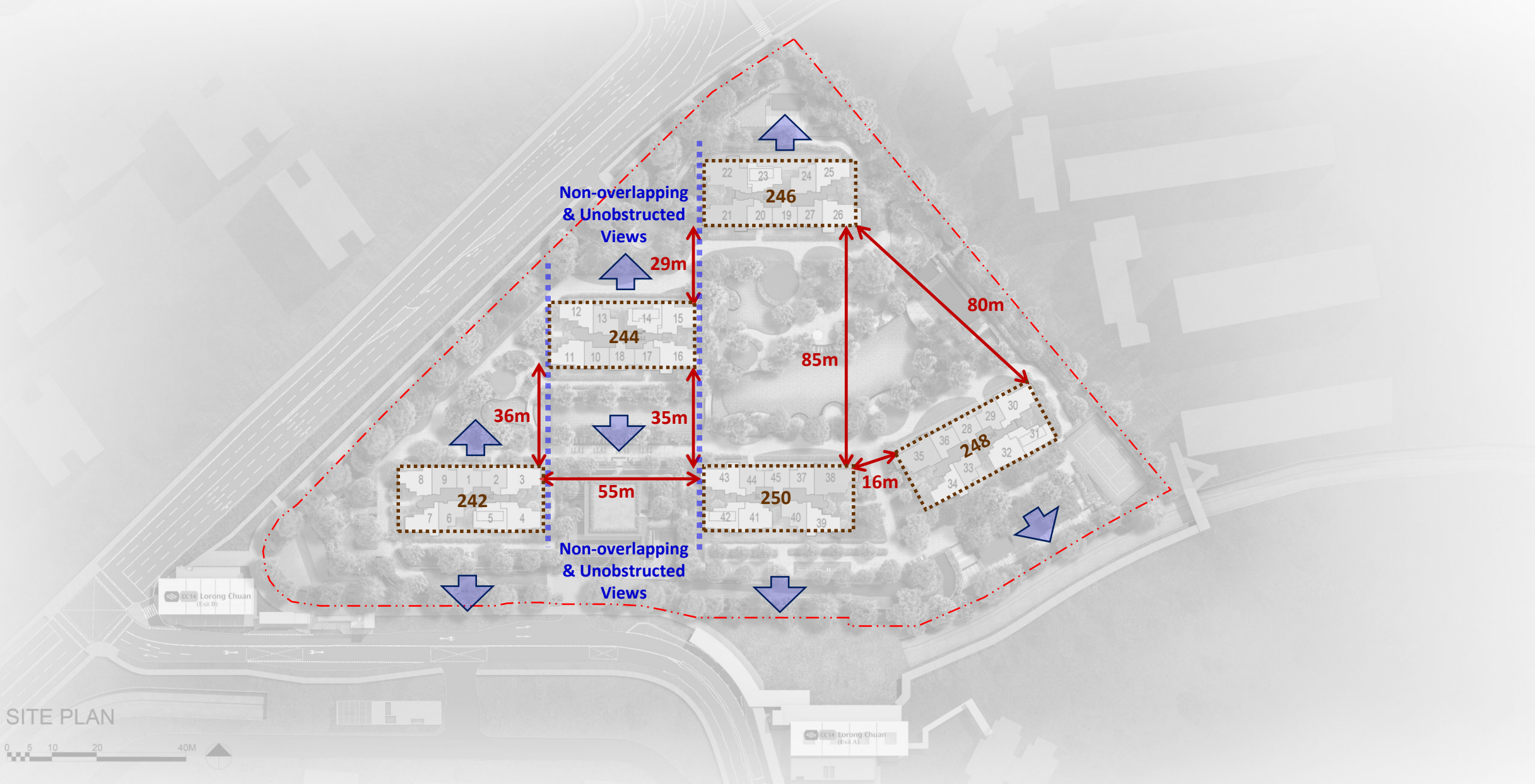
LAYOUT & UNIT DISTRIBUTION

CHUAN PARK Unit Orientation



CHUAN PARK

Unobstructed Views & Distance between Residential Blocks



CHUAN PARK Unit Views



CHUAN PARK

Unit Distribution



UNIT TYPES		SIZE (m²)	NO. OF UNITS	PERCENTAGE	
2 Bed 2 Bath	B1/ B1-P	65	99	10.8%	44%
	B1-U	77	5	0.5%	
2 Bed 2 Bath + Study	B2/ B2-P	68	185	20.2%	
	B2-U	81	10	1%	
	B2a/ B2a-P	69	99	10.8%	
	B2a-U	82	5	0.5%	
3 Bed 2 Bath (Classic)	C1/ C1-P	85	42	4.6%	47%
	C1-U	103	2	0.2%	
	C1a/ C1a-P	87	99	10.8%	
	C1a-U	104	5	0.5%	
	C1b/ C1b-P	89	42	4.6%	
3 Bed 2 Bath (Deluxe)	C2/ C2-P	95	78	8.5%	
	C2-U	112	2	0.2%	
	C2a/ C2a-P	96	57	6.2%	
3 Bed 2 Bath (Premium)	C3/ C3-P	112	57	6.2%	
	C3-U	138	3	0.3%	
	C3a/ C3a-P	112	21	2.3%	
	C3a-U	139	1	0.1%	
	C3b/ C3b-P	114	21	2.3%	
	C3b-U	140	1	0.1%	
4 Bed 3 Bath	D1/ D1-P	124	36	4.0%	6.6%
	D1-U	150	2	0.2%	
	D2/ D2-P	129	21	2.3%	
	D2-U	156	1	0.1%	
5 Bed 3 Bath	E1/ E1-P	144	21	2.3%	2.4%
	E1-U	171	1	0.1%	
TOTAL			916		

Development planning was submitted before GFA harmonization.
Area includes AC ledges and balcony. RC ledges and voids are excluded from the strata area.

CHUAN PARK Unit Distribution

242 LORONG CHUAN S556744

UNIT	01	02	03	04	05	06	07	08	09
22	B2-m-U	B2-U	C2-m-U	C2-U		B2a-m-U	C1a-U	C1-U	B1-U
21	B2-m	B2	C2-m	C2	C2a	B2a-m	C1a	C1	B1
20	B2-m	B2	C2-m	C2	C2a	B2a-m	C1a	C1	B1
19	B2-m	B2	C2-m	C2	C2a	B2a-m	C1a	C1	B1
18	B2-m	B2	C2-m	C2	C2a	B2a-m	C1a	C1	B1
17	B2-m	B2	C2-m	C2	C2a	B2a-m	C1a	C1	B1
16	B2-m	B2	C2-m	C2	C2a	B2a-m	C1a	C1	B1
15	B2-m	B2	C2-m	C2	C2a	B2a-m	C1a	C1	B1
14	B2-m	B2	C2-m	C2	C2a	B2a-m	C1a	C1	B1
13	B2-m	B2	C2-m	C2	C2a	B2a-m	C1a	C1	B1
12	B2-m	B2	C2-m	C2	C2a	B2a-m	C1a	C1	B1
11	B2-m	B2	C2-m	C2	C2a	B2a-m	C1a	C1	B1
10	B2-m	B2	C2-m	C2	C2a	B2a-m	C1a	C1	B1
9	B2-m	B2	C2-m	C2	C2a	B2a-m	C1a	C1	B1
8	B2-m	B2	C2-m	C2	C2a	B2a-m	C1a	C1	B1
7	B2-m	B2	C2-m	C2	C2a	B2a-m	C1a	C1	B1
6	B2-m	B2	C2-m	C2	C2a	B2a-m	C1a	C1	B1
5	B2-m	B2	C2-m	C2	C2a	B2a-m	C1a	C1	B1
4	B2-m	B2	C2-m	C2	C2a	B2a-m	C1a	C1	B1
3	B2-m		C2-m	C2	C2a	B2a-m	C1a	C1	B1
2	B2-m		C2-m	C2	C2a	B2a-m	C1a	C1	B1
1	B2-m-P		C2-m-P	C2-P	C2a-P	B2a-m-P	C1a-P	C1-P	B1-P

244 LORONG CHUAN S556745

UNIT	10	11	12	13	14	15	16	17	18
22	B1-m-U	C1-m-U	C1a-m-U	B2a-U		C3b-U	C3-U	B2-m-U	B2-U
21	B1-m	C1-m	C1a-m	B2a	C1b	C3b	C3	B2-m	B2
20	B1-m	C1-m	C1a-m	B2a	C1b	C3b	C3	B2-m	B2
19	B1-m	C1-m	C1a-m	B2a	C1b	C3b	C3	B2-m	B2
18	B1-m	C1-m	C1a-m	B2a	C1b	C3b	C3	B2-m	B2
17	B1-m	C1-m	C1a-m	B2a	C1b	C3b	C3	B2-m	B2
16	B1-m	C1-m	C1a-m	B2a	C1b	C3b	C3	B2-m	B2
15	B1-m	C1-m	C1a-m	B2a	C1b	C3b	C3	B2-m	B2
14	B1-m	C1-m	C1a-m	B2a	C1b	C3b	C3	B2-m	B2
13	B1-m	C1-m	C1a-m	B2a	C1b	C3b	C3	B2-m	B2
12	B1-m	C1-m	C1a-m	B2a	C1b	C3b	C3	B2-m	B2
11	B1-m	C1-m	C1a-m	B2a	C1b	C3b	C3	B2-m	B2
10	B1-m	C1-m	C1a-m	B2a	C1b	C3b	C3	B2-m	B2
9	B1-m	C1-m	C1a-m	B2a	C1b	C3b	C3	B2-m	B2
8	B1-m	C1-m	C1a-m	B2a	C1b	C3b	C3	B2-m	B2
7	B1-m	C1-m	C1a-m	B2a	C1b	C3b	C3	B2-m	B2
6	B1-m	C1-m	C1a-m	B2a	C1b	C3b	C3	B2-m	B2
5	B1-m	C1-m	C1a-m	B2a	C1b	C3b	C3	B2-m	B2
4	B1-m	C1-m	C1a-m	B2a	C1b	C3b	C3	B2-m	B2
3	B1-m	C1-m	C1a-m	B2a	C1b	C3b	C3		B2
2	B1-m	C1-m	C1a-m	B2a	C1b	C3b	C3		B2
1	B1-m-P	C1-m-P	C1a-m-P	B2a-P	C1b-P	C3b-P	C3-P		B2-P

246 LORONG CHUAN S556746

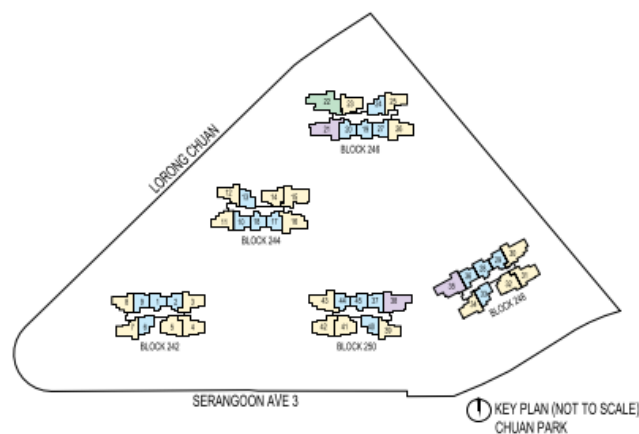
UNIT	19	20	21	22	23	24	25	26	27
22	B2-m-U	B2-U	D2-U	E1-U		B2a-m-U	C1a-U	C3a-U	B1-U
21	B2-m	B2	D2	E1	C1b-m	B2a-m	C1a	C3a	B1
20	B2-m	B2	D2	E1	C1b-m	B2a-m	C1a	C3a	B1
19	B2-m	B2	D2	E1	C1b-m	B2a-m	C1a	C3a	B1
18	B2-m	B2	D2	E1	C1b-m	B2a-m	C1a	C3a	B1
17	B2-m	B2	D2	E1	C1b-m	B2a-m	C1a	C3a	B1
16	B2-m	B2	D2	E1	C1b-m	B2a-m	C1a	C3a	B1
15	B2-m	B2	D2	E1	C1b-m	B2a-m	C1a	C3a	B1
14	B2-m	B2	D2	E1	C1b-m	B2a-m	C1a	C3a	B1
13	B2-m	B2	D2	E1	C1b-m	B2a-m	C1a	C3a	B1
12	B2-m	B2	D2	E1	C1b-m	B2a-m	C1a	C3a	B1
11	B2-m	B2	D2	E1	C1b-m	B2a-m	C1a	C3a	B1
10	B2-m	B2	D2	E1	C1b-m	B2a-m	C1a	C3a	B1
9	B2-m	B2	D2	E1	C1b-m	B2a-m	C1a	C3a	B1
8	B2-m	B2	D2	E1	C1b-m	B2a-m	C1a	C3a	B1
7	B2-m	B2	D2	E1	C1b-m	B2a-m	C1a	C3a	B1
6	B2-m	B2	D2	E1	C1b-m	B2a-m	C1a	C3a	B1
5	B2-m	B2	D2	E1	C1b-m	B2a-m	C1a	C3a	B1
4	B2-m	B2	D2	E1	C1b-m	B2a-m	C1a	C3a	B1
3	B2-m		D2	E1	C1b-m	B2a-m	C1a	C3a	B1
2	B2-m		D2	E1	C1b-m	B2a-m	C1a	C3a	B1
1	B2-m-P		D2-P	E1-P	C1b-m-P	B2a-m-P	C1a-P	C3a-P	B1-P

248 LORONG CHUAN S556747

UNIT	28	29	30	31	32	33	34	35	36
19	B2-m-U	B2-U	C3-m-U			B2a-m-U	C1a-U	D1-m-U	B1-U
18	B2-m	B2	C3-m	C2	C2a	B2a-m	C1a	D1-m	B1
17	B2-m	B2	C3-m	C2	C2a	B2a-m	C1a	D1-m	B1
16	B2-m	B2	C3-m	C2	C2a	B2a-m	C1a	D1-m	B1
15	B2-m	B2	C3-m	C2	C2a	B2a-m	C1a	D1-m	B1
14	B2-m	B2	C3-m	C2	C2a	B2a-m	C1a	D1-m	B1
13	B2-m	B2	C3-m	C2	C2a	B2a-m	C1a	D1-m	B1
12	B2-m	B2	C3-m	C2	C2a	B2a-m	C1a	D1-m	B1
11	B2-m	B2	C3-m	C2	C2a	B2a-m	C1a	D1-m	B1
10	B2-m	B2	C3-m	C2	C2a	B2a-m	C1a	D1-m	B1
9	B2-m	B2	C3-m	C2	C2a	B2a-m	C1a	D1-m	B1
8	B2-m	B2	C3-m	C2	C2a	B2a-m	C1a	D1-m	B1
7	B2-m	B2	C3-m	C2	C2a	B2a-m	C1a	D1-m	B1
6	B2-m	B2	C3-m	C2	C2a	B2a-m	C1a	D1-m	B1
5	B2-m	B2	C3-m	C2	C2a	B2a-m	C1a	D1-m	B1
4	B2-m	B2	C3-m	C2	C2a	B2a-m	C1a	D1-m	B1
3	B2-m	B2	C3-m	C2	C2a	B2a-m	C1a	D1-m	B1
2	B2-m		C3-m	C2	C2a	B2a-m	C1a	D1-m	B1
1	B2-m-P		C3-m-P	C2-P	C2a-P	B2a-m-P	C1a-P	D1-m-P	B1-P

250 LORONG CHUAN S556748

UNIT	37	38	39	40	41	42	43	44	45
19	B1-m-U	D1-U	C1a-m-U	B2a-U			C3-U	B2-m-U	B2-U
18	B1-m	D1	C1a-m	B2a	C2a-m	C2-m	C3	B2-m	B2
17	B1-m	D1	C1a-m	B2a	C2a-m	C2-m	C3	B2-m	B2
16	B1-m	D1	C1a-m	B2a	C2a-m	C2-m	C3	B2-m	B2
15	B1-m	D1	C1a-m	B2a	C2a-m	C2-m	C3	B2-m	B2
14	B1-m	D1	C1a-m	B2a	C2a-m	C2-m	C3	B2-m	B2
13	B1-m	D1	C1a-m	B2a	C2a-m	C2-m	C3	B2-m	B2
12	B1-m	D1	C1a-m	B2a	C2a-m	C2-m	C3	B2-m	B2
11	B1-m	D1	C1a-m	B2a	C2a-m	C2-m	C3	B2-m	B2
10	B1-m	D1	C1a-m	B2a	C2a-m	C2-m	C3	B2-m	B2
9	B1-m	D1	C1a-m	B2a	C2a-m	C2-m	C3	B2-m	B2
8	B1-m	D1	C1a-m	B2a	C2a-m	C2-m	C3	B2-m	B2
7	B1-m	D1	C1a-m	B2a	C2a-m	C2-m	C3	B2-m	B2
6	B1-m	D1	C1a-m	B2a	C2a-m	C2-m	C3	B2-m	B2
5	B1-m	D1	C1a-m	B2a	C2a-m	C2-m	C3	B2-m	B2
4	B1-m	D1	C1a-m	B2a	C2a-m	C2-m	C3	B2-m	B2
3	B1-m	D1	C1a-m	B2a	C2a-m	C2-m	C3	B2-m	B2
2	B1-m	D1	C1a-m	B2a	C2a-m	C2-m	C3		B2
1	B1-m-P	D1-P	C1a-m-P	B2a-P	C2a-m-P	C2-m-P	C3-P		B2-P



Unit Types

- 2 Bedroom & 2 Bedroom + Study
- 3 Bedroom
- 4 Bedroom
- 5 Bedroom

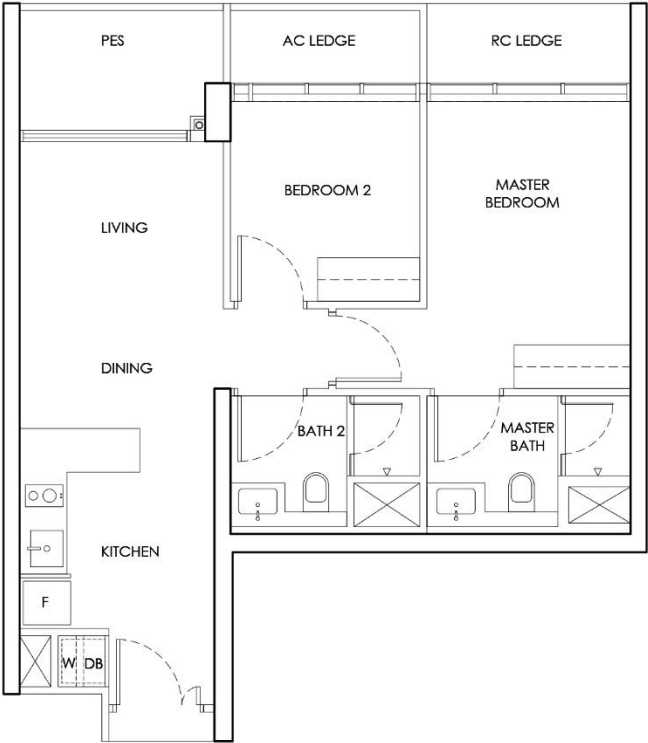
CHUAN PARK

Unit Layout Plan – 2 Bed 2 Bath

TYPE B1-P
2 Bedroom

Typical = 65 sqm
Upper = 77 sqm

Area includes AC ledges and balcony.
RC ledges and voids are excluded from the strata area.



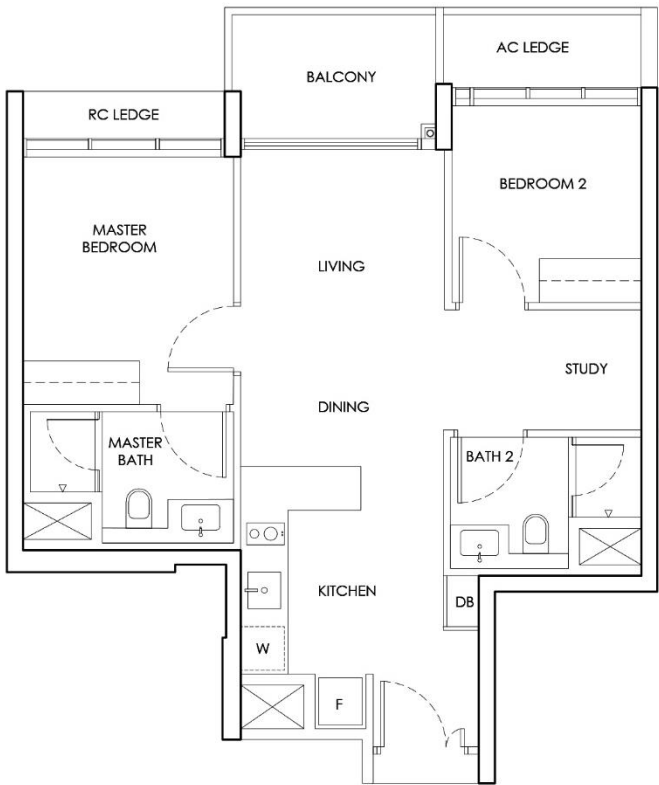
CHUAN PARK

Unit Layout Plan – 2 Bed 2 Bath + Study

TYPE B2
2 Bedroom

Typical = 68 sqm
Upper = 81 sqm

Area includes AC ledges and balcony.
RC ledges and voids are excluded from the strata area.

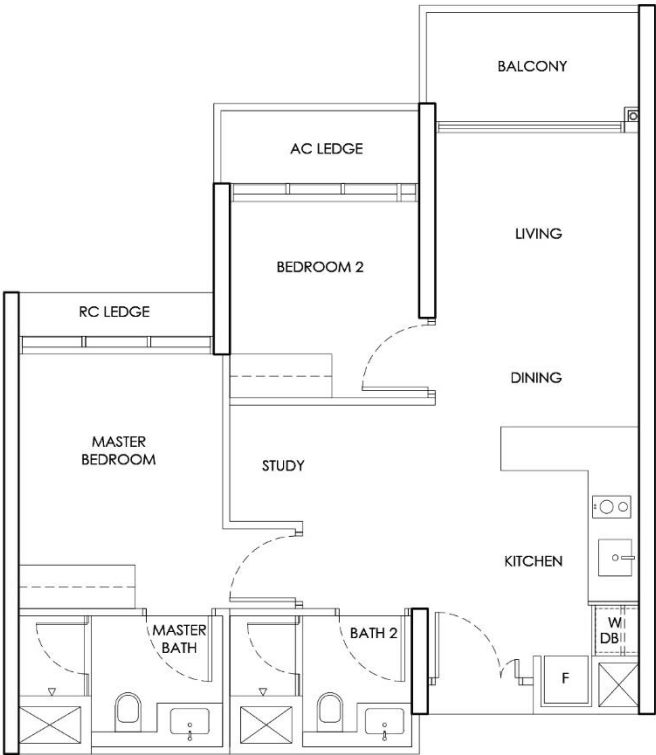


TYPE B2a-m
2 Bedroom

2 BEDROOM SHOW UNIT

Typical = 69 sqm
Upper = 82 sqm

Area includes AC ledges and balcony.
RC ledges and voids are excluded from the strata area.



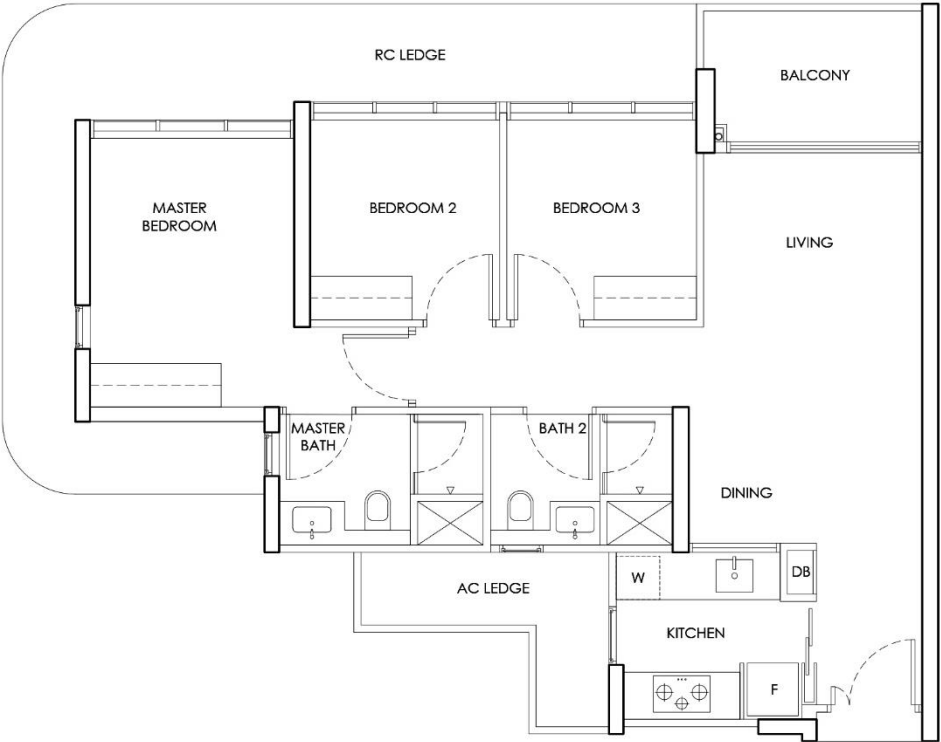
CHUAN PARK

Unit Layout Plan – 3 Bed 2 Bath (Classic)

TYPE C1
3 Bedroom

Typical = 85 sqm
Upper = 103 sqm

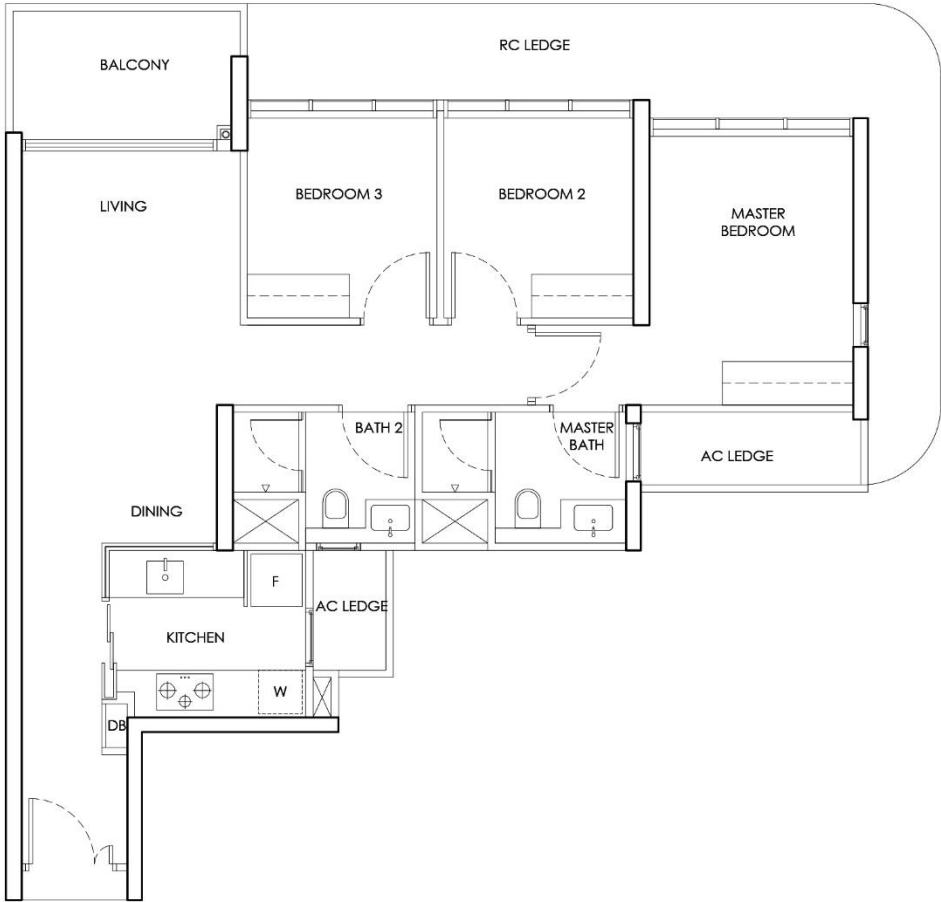
Area includes AC ledges and balcony.
RC ledges and voids are excluded from the strata area.



TYPE C1a
3 Bedroom

Typical = 87 sqm
Upper = 104 sqm

Area includes AC ledges and balcony.
RC ledges and voids are excluded from the strata area.



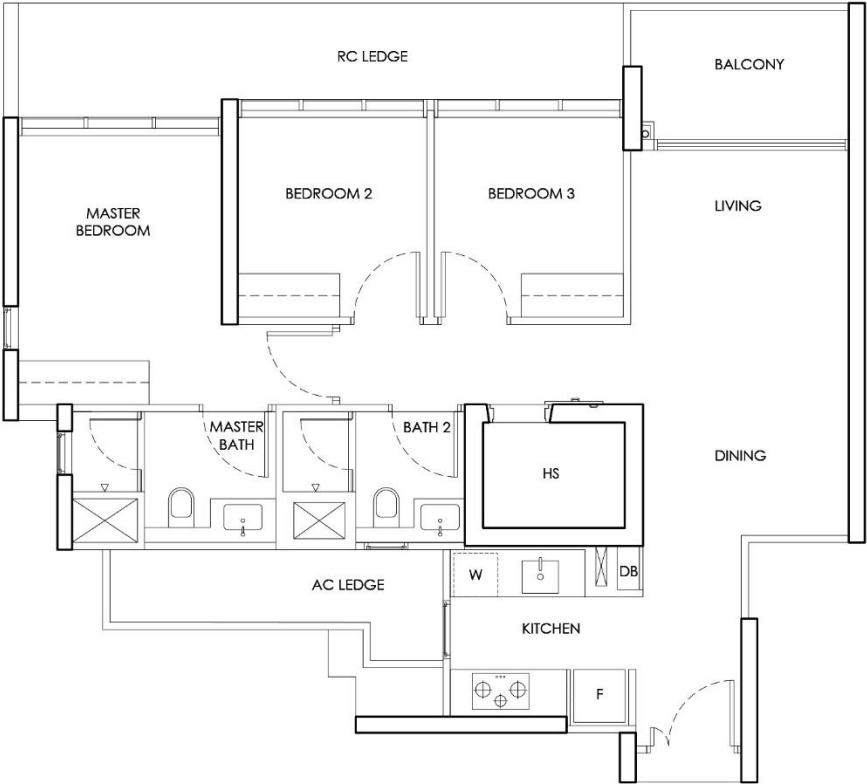
CHUAN PARK

Unit Layout Plan – 3 Bed 2 Bath (Classic)

TYPE C1b
3 Bedroom

Typical = 89 sqm

Area includes AC ledges and balcony.
RC ledges and voids are excluded from the strata area.



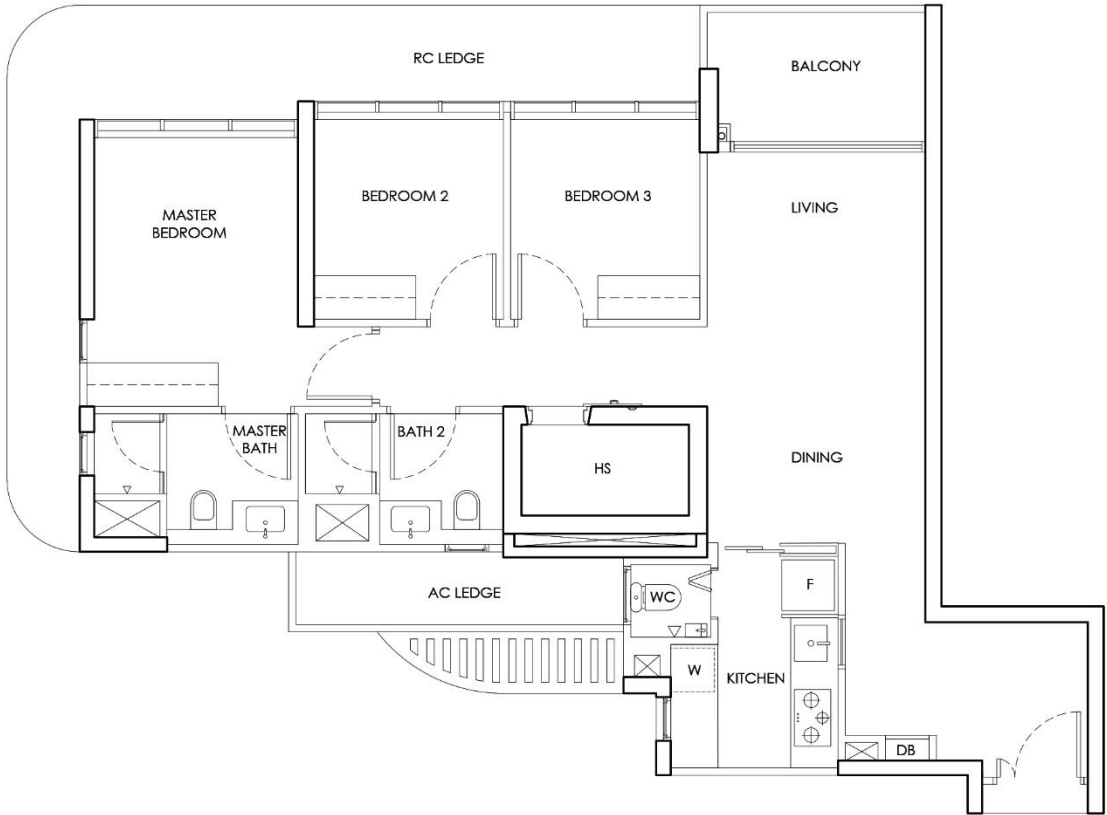
CHUAN PARK

Unit Layout Plan – 3 Bed 2 Bath (Deluxe)

TYPE C2
3 Bedroom

Typical = 95 sqm
Upper = 112 sqm

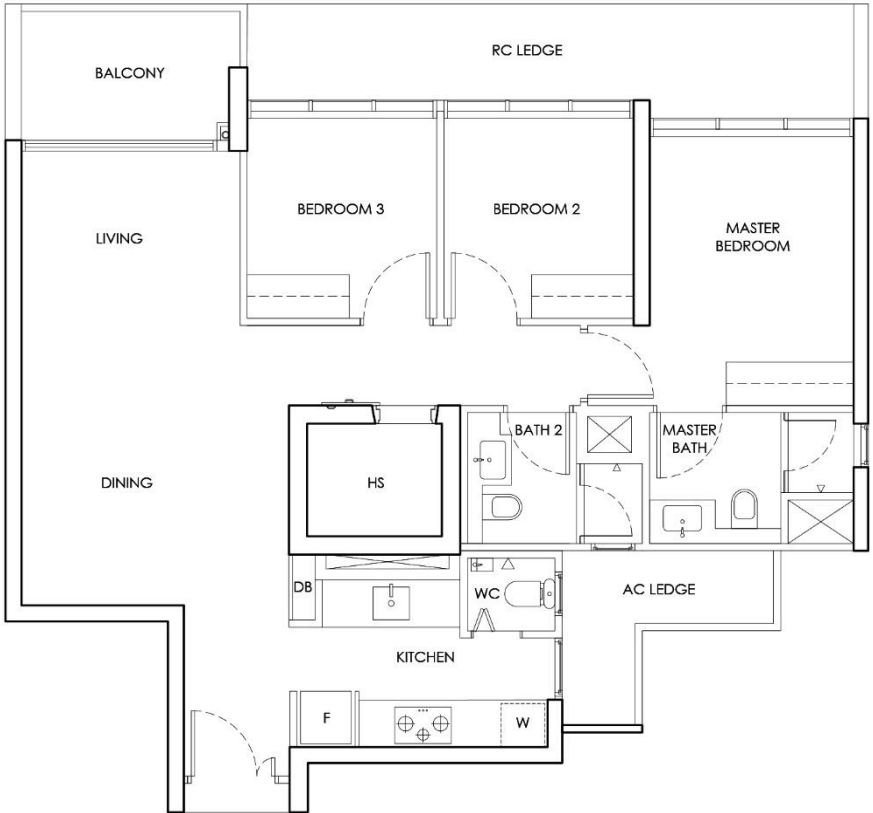
Area includes AC ledges and balcony.
RC ledges and voids are excluded from the strata area.



TYPE C2a
3 Bedroom

Typical = 96 sqm

Area includes AC ledges and balcony.
RC ledges and voids are excluded from the strata area.



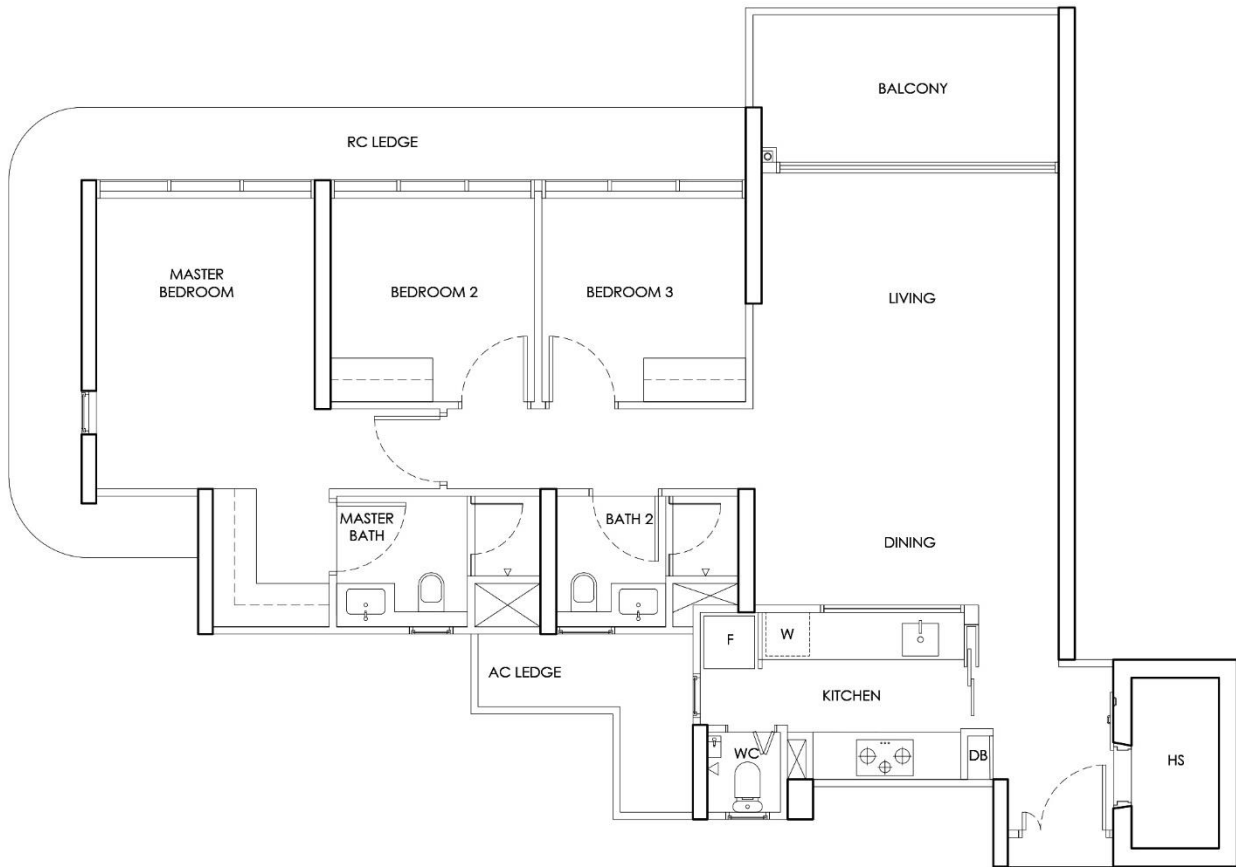
CHUAN PARK

Unit Layout Plan – 3 Bed 2 Bath (Premium)

TYPE C3
3 Bedroom

Typical = 112 sqm
Upper = 138 sqm

Area includes AC ledges and balcony.
RC ledges and voids are excluded from the strata area.

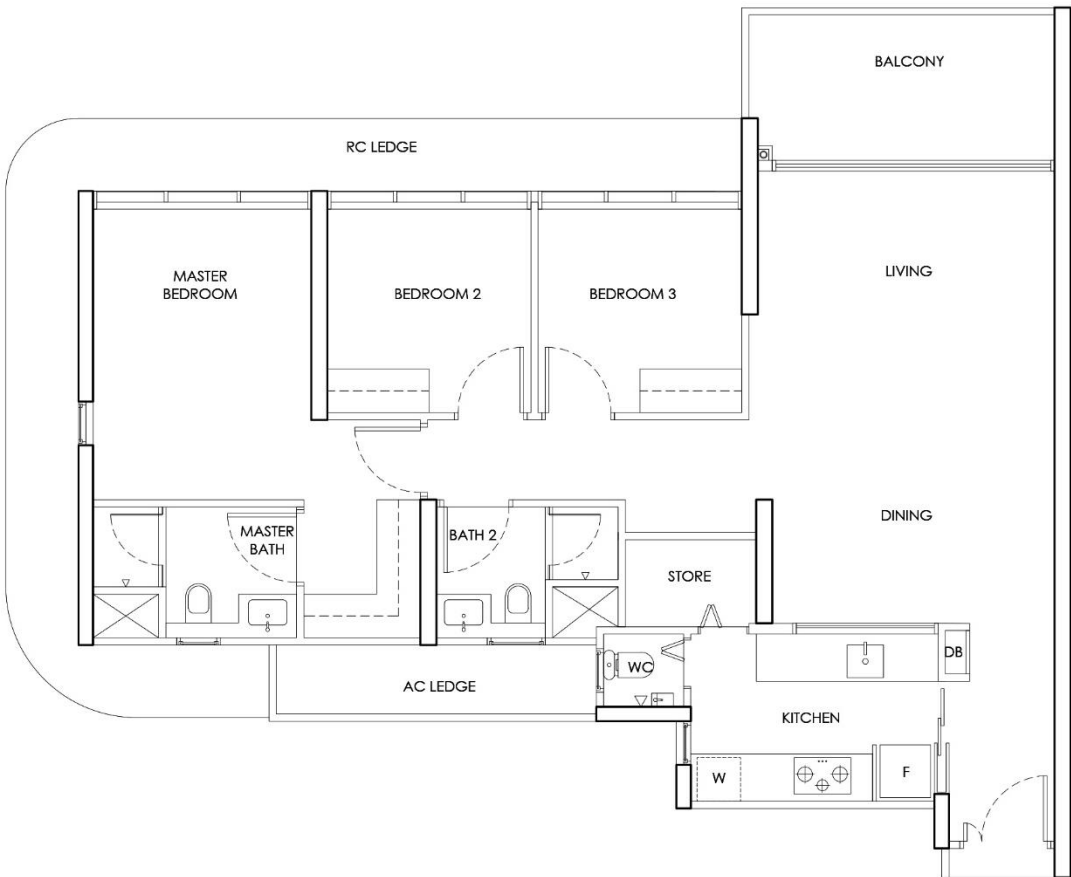


0 1 3 5

TYPE C3a
3 Bedroom

Typical = 112 sqm
Upper = 139 sqm

Area includes AC ledges and balcony.
RC ledges and voids are excluded from the strata area.



0 1 3 5

CHUAN PARK

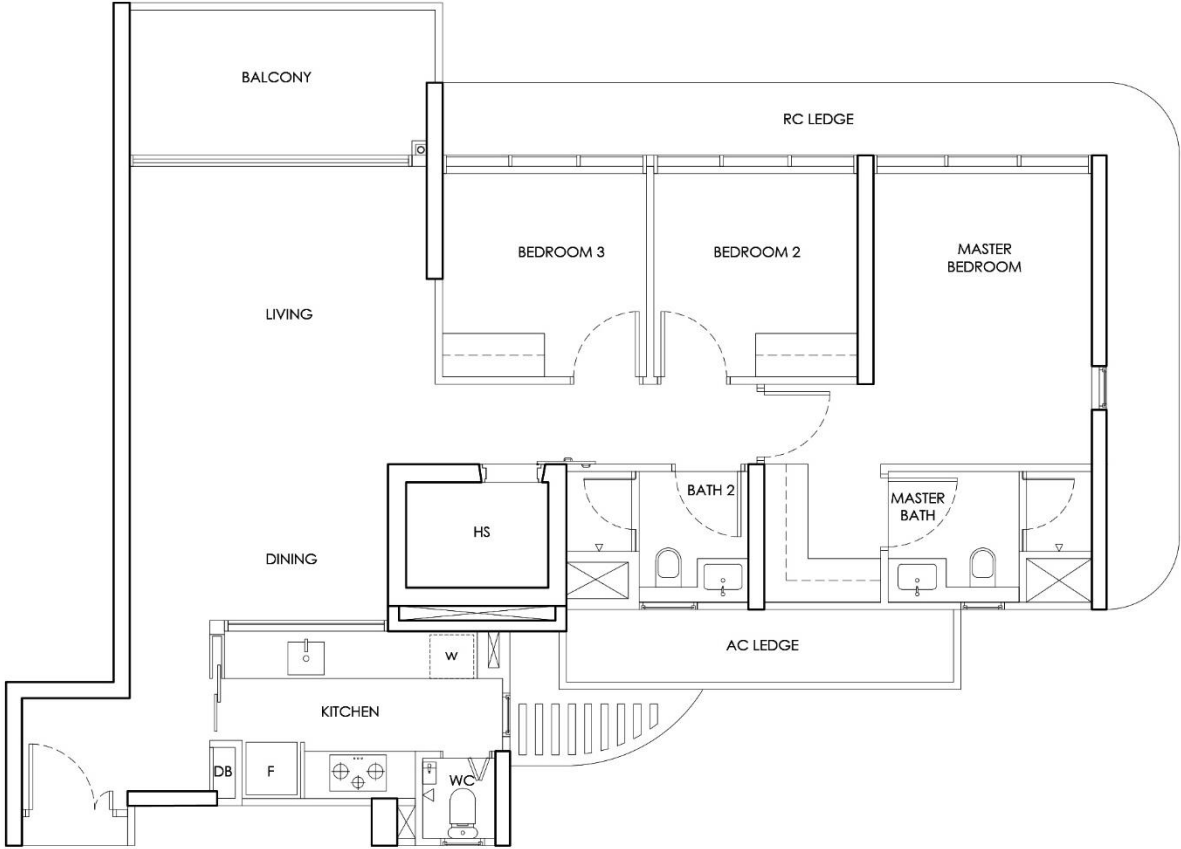
Unit Layout Plan – 3 Bed 2 Bath (Premium)

TYPE C3b
3 Bedroom

3 BEDROOM SHOW UNIT

Typical = 114 sqm
Upper = 140 sqm

Area includes AC ledges and balcony.
RC ledges and voids are excluded from the strata area.



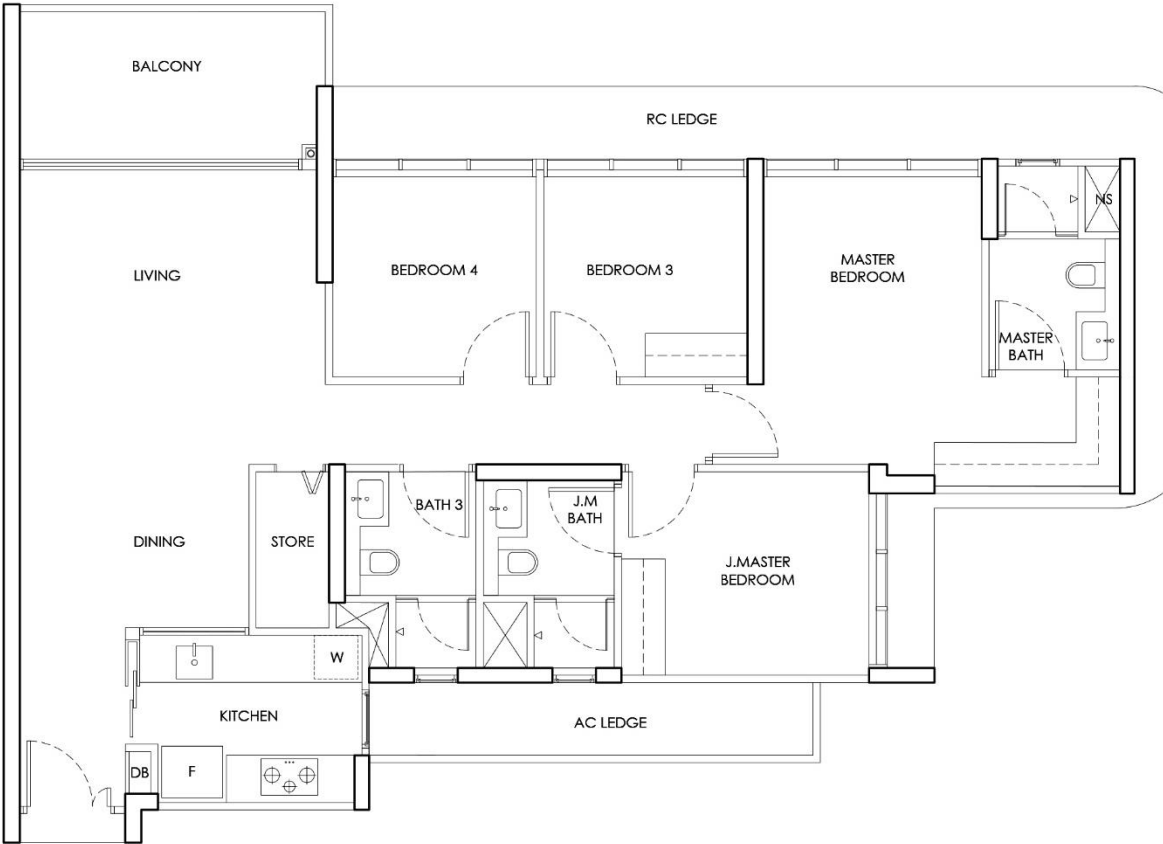
CHUAN PARK

Unit Layout Plan – 4 Bed 3 Bath

TYPE D1
4 Bedroom

Typical = 124 sqm
Upper = 150 sqm

Area includes AC ledges and balcony.
RC ledges and voids are excluded from the strata area.

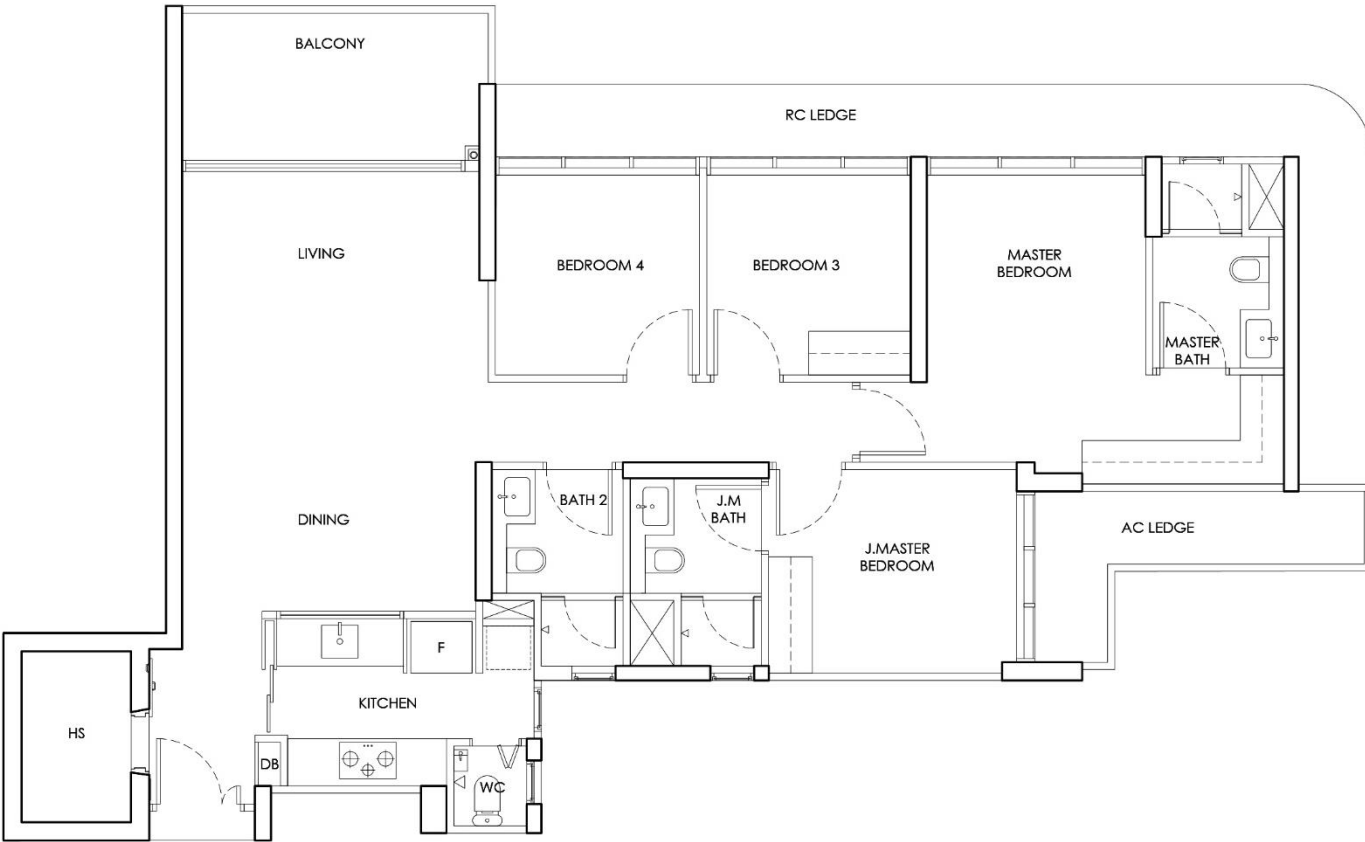


0 1 3 5

TYPE D2
4 Bedroom

Typical = 129 sqm
Upper = 156 sqm

Area includes AC ledges and balcony.
RC ledges and voids are excluded from the strata area.



0 1 3 5

CHUAN PARK

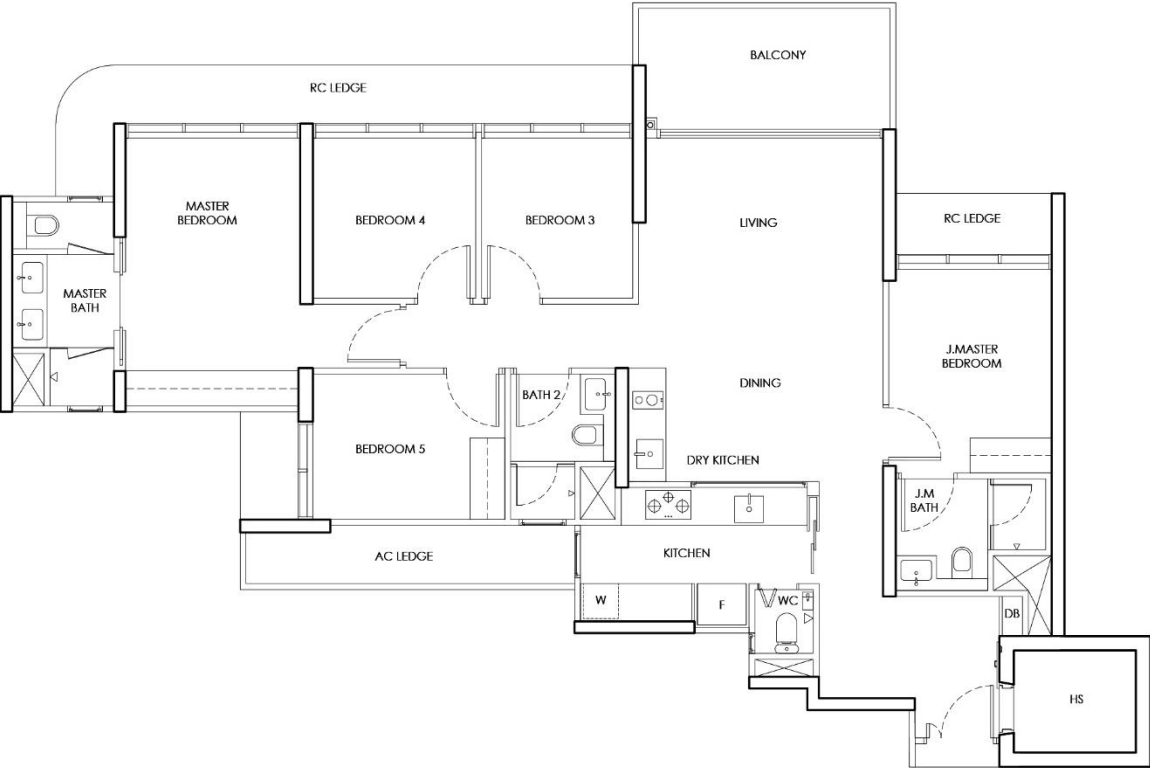
Unit Layout Plan – 5 Bed 3 Bath

TYPE E1
5 Bedroom

5 BEDROOM SHOW UNIT

Typical = 144 sqm
Upper = 171 sqm

Area includes AC ledges and balcony.
RC ledges and voids are excluded from the strata area.



0 1 3 5

CHUAN PARK

COMMON FACILITIES

CHUAN PARK Common Facilities



CHUAN PARK

Common Facilities – Arrival Courtyard

SITE PLAN

0 5 10 20 40M



1ST STOREY

1. FUNCTION ROOM
2. LAWN
3. RESPITE DECK
4. RESIDENTIAL COURTYARD
5. 50M LAP POOL
6. WATER LOUNGE
7. POOLSIDE CABANAS & POOLSIDE WALK
8. OASIS POOL
9. OASIS DECK
10. RECESSED LOUNGES
11. RELAXATION DECK & RELAXATION LAWN
12. OASIS COVES & OASIS JACUZZI
13. GYM
14. HYDROTHERAPY COVE
15. KIDS ADVENTURE WATER
16. POOLSIDE PAVILIONS & POOLSIDE DECK
17. BOTANICAL DECK
18. KIDS PLAYGROUND
19. KIDS CLUB
20. KIDS WADING POOL
21. TENNIS COURT
22. GARDEN PAVILION
23. ORCHARD PAVILION
24. TRANQUIL ENCLAVE
25. FOREST PAVILION
26. FOREST SERENITY
27. RIVERSIDE PAVILIONS
28. RIVERSIDE PLAZA
29. ADULT FITNESS CORNER
30. ELDERLY FITNESS CORNER
31. YOGA DECK
32. FOYER LOBBY
33. CHANGING ROOMS
34. COMMON TOILET
35. VENTILATION SHAFT

ROOF LEVEL

36. WATER TANK

BASEMENT 1

- A. ENTRANCE
- B. ARRIVAL COURTYARD
- C. STUDY ROOM
- D. DROP-OFF
- E. BICYCLE PARKING LOTS
- F. GUARD HOUSE
- G. PEDESTRIAN SIDE GATES
- H. ELECTRICAL SUBSTATION
- I. COMMERCIAL UNIT
- J. GENERATOR SET
- K. MAINTENANCE / SERVICE ACCESS
- L. FIRE ENGINE ACCESS
- M. COMMON LIFT TO E-DECK
- N. COMMON TOILET
- O. MANAGEMENT OFFICE
- P. OPEN PLAZA
- Q. GUARD POST
- R. BIN CENTRE

CHUAN PARK

Common Facilities – Arrival Courtyard



Artist's Impression

CHUAN PARK

Common Facilities – Kids Wading Pool & Garden Pavilion

SITE PLAN



1ST STOREY

1. FUNCTION ROOM
2. LAWN
3. RESPITE DECK
4. RESIDENTIAL COURTYARD
5. 50M LAP POOL
6. WATER LOUNGE
7. POOLSIDE CABANAS & POOLSIDE WALK
8. OASIS POOL
9. OASIS DECK
10. RECESSED LOUNGES
11. RELAXATION DECK & RELAXATION LAWN
12. OASIS COVES & OASIS JACUZZI
13. GYM
14. HYDROTHERAPY COVE
15. KIDS ADVENTURE WATER
16. POOLSIDE PAVILIONS & POOLSIDE DECK
17. BOTANICAL DECK
18. KIDS PLAYGROUND
19. KIDS CLUB
20. KIDS WADING POOL
21. TENNIS COURT
22. GARDEN PAVILION
23. ORCHARD PAVILION
24. TRANQUIL ENCLAVE
25. FOREST PAVILION
26. FOREST SERENITY
27. RIVERSIDE PAVILIONS
28. RIVERSIDE PLAZA
29. ADULT FITNESS CORNER
30. ELDERLY FITNESS CORNER
31. YOGA DECK
32. FOYER LOBBY
33. CHANGING ROOMS
34. COMMON TOILET
35. VENTILATION SHAFT

ROOF LEVEL

36. WATER TANK

BASEMENT 1

- A. ENTRANCE
- B. ARRIVAL COURTYARD
- C. STUDY ROOM
- D. DROP-OFF
- E. BICYCLE PARKING LOTS
- F. GUARD HOUSE
- G. PEDESTRIAN SIDE GATES
- H. ELECTRICAL SUBSTATION
- I. COMMERCIAL UNIT
- J. GENERATOR SET
- K. MAINTENANCE / SERVICE ACCESS
- L. FIRE ENGINE ACCESS
- M. COMMON LIFT TO E-DECK
- N. COMMON TOILET
- O. MANAGEMENT OFFICE
- P. OPEN PLAZA
- Q. GUARD POST
- R. BIN CENTRE

CHUAN PARK

Common Facilities – Kids Wading Pool & Garden Pavilion



Artist's Impression

CHUAN PARK

Common Facilities – 50 Lap Pool

SITE PLAN

0 5 10 20 40M

1ST STOREY

1. FUNCTION ROOM
2. LAWN
3. RESPITE DECK
4. RESIDENTIAL COURTYARD
5. 50M LAP POOL
6. WATER LOUNGE
7. POOLSIDE CABANAS & POOLSIDE WALK
8. OASIS POOL
9. OASIS DECK
10. RECESSED LOUNGES
11. RELAXATION DECK & RELAXATION LAWN
12. OASIS COVES & OASIS JACUZZI
13. GYM
14. HYDROTHERAPY COVE
15. KIDS ADVENTURE WATER
16. POOLSIDE PAVILIONS & POOLSIDE DECK
17. BOTANICAL DECK
18. KIDS PLAYGROUND
19. KIDS CLUB
20. KIDS WADING POOL
21. TENNIS COURT
22. GARDEN PAVILION
23. ORCHARD PAVILION
24. TRANQUIL ENCLAVE
25. FOREST PAVILION
26. FOREST SERENITY
27. RIVERSIDE PAVILIONS
28. RIVERSIDE PLAZA
29. ADULT FITNESS CORNER
30. ELDERLY FITNESS CORNER
31. YOGA DECK
32. FOYER LOBBY
33. CHANGING ROOMS
34. COMMON TOILET
35. VENTILATION SHAFT

ROOF LEVEL

36. WATER TANK

BASEMENT 1

- A. ENTRANCE
- B. ARRIVAL COURTYARD
- C. STUDY ROOM
- D. DROP-OFF
- E. BICYCLE PARKING LOTS
- F. GUARD HOUSE
- G. PEDESTRIAN SIDE GATES
- H. ELECTRICAL SUBSTATION
- I. COMMERCIAL UNIT
- J. GENERATOR SET
- K. MAINTENANCE / SERVICE ACCESS
- L. FIRE ENGINE ACCESS
- M. COMMON LIFT TO E-DECK
- N. COMMON TOILET
- O. MANAGEMENT OFFICE
- P. OPEN PLAZA
- Q. GUARD POST
- R. BIN CENTRE

CHUAN PARK

Common Facilities – 50 Lap Pool



Artist's Impression

CHUAN PARK

Common Facilities – 50 Lap Pool



Artist's Impression

CHUAN PARK

Common Facilities – Oasis Pool

SITE PLAN

0 5 10 20 40M

1ST STOREY

1. FUNCTION ROOM
2. LAWN
3. RESPITE DECK
4. RESIDENTIAL COURTYARD
5. 50M LAP POOL
6. WATER LOUNGE
7. POOLSIDE CABANAS & POOLSIDE WALK
8. OASIS POOL
9. OASIS DECK
10. RECESSED LOUNGES
11. RELAXATION DECK & RELAXATION LAWN
12. OASIS COVES & OASIS JACUZZI
13. GYM
14. HYDROTHERAPY COVE
15. KIDS ADVENTURE WATER
16. POOLSIDE PAVILIONS & POOLSIDE DECK
17. BOTANICAL DECK
18. KIDS PLAYGROUND
19. KIDS CLUB
20. KIDS WADING POOL
21. TENNIS COURT
22. GARDEN PAVILION
23. ORCHARD PAVILION
24. TRANQUIL ENCLAVE
25. FOREST PAVILION
26. FOREST SERENITY
27. RIVERSIDE PAVILIONS
28. RIVERSIDE PLAZA
29. ADULT FITNESS CORNER
30. ELDERLY FITNESS CORNER
31. YOGA DECK
32. FOYER LOBBY
33. CHANGING ROOMS
34. COMMON TOILET
35. VENTILATION SHAFT

ROOF LEVEL

36. WATER TANK

BASEMENT 1

- A. ENTRANCE
- B. ARRIVAL COURTYARD
- C. STUDY ROOM
- D. DROP-OFF
- E. BICYCLE PARKING LOTS
- F. GUARD HOUSE
- G. PEDESTRIAN SIDE GATES
- H. ELECTRICAL SUBSTATION
- I. COMMERCIAL UNIT
- J. GENERATOR SET
- K. MAINTENANCE / SERVICE ACCESS
- L. FIRE ENGINE ACCESS
- M. COMMON LIFT TO E-DECK
- N. COMMON TOILET
- O. MANAGEMENT OFFICE
- P. OPEN PLAZA
- Q. GUARD POST
- R. BIN CENTRE

CHUAN PARK Common Facilities – Oasis Pool



CHUAN PARK

Common Facilities – Poolside Walk & Cabanas

SITE PLAN

0 5 10 20 40M

1ST STOREY

1. FUNCTION ROOM
2. LAWN
3. RESPITE DECK
4. RESIDENTIAL COURTYARD
5. 50M LAP POOL
6. WATER LOUNGE
7. POOLSIDE CABANAS & POOLSIDE WALK
8. OASIS POOL
9. OASIS DECK
10. RECESSED LOUNGES
11. RELAXATION DECK & RELAXATION LAWN
12. OASIS COVES & OASIS JACUZZI
13. GYM
14. HYDROTHERAPY COVE
15. KIDS ADVENTURE WATER
16. POOLSIDE PAVILIONS & POOLSIDE DECK
17. BOTANICAL DECK
18. KIDS PLAYGROUND
19. KIDS CLUB
20. KIDS WADING POOL
21. TENNIS COURT
22. GARDEN PAVILION
23. ORCHARD PAVILION
24. TRANQUIL ENCLAVE
25. FOREST PAVILION
26. FOREST SERENITY
27. RIVERSIDE PAVILIONS
28. RIVERSIDE PLAZA
29. ADULT FITNESS CORNER
30. ELDERLY FITNESS CORNER
31. YOGA DECK
32. FOYER LOBBY
33. CHANGING ROOMS
34. COMMON TOILET
35. VENTILATION SHAFT

ROOF LEVEL

36. WATER TANK

BASEMENT 1

- A. ENTRANCE
- B. ARRIVAL COURTYARD
- C. STUDY ROOM
- D. DROP-OFF
- E. BICYCLE PARKING LOTS
- F. GUARD HOUSE
- G. PEDESTRIAN SIDE GATES
- H. ELECTRICAL SUBSTATION
- I. COMMERCIAL UNIT
- J. GENERATOR SET
- K. MAINTENANCE / SERVICE ACCESS
- L. FIRE ENGINE ACCESS
- M. COMMON LIFT TO E-DECK
- N. COMMON TOILET
- O. MANAGEMENT OFFICE
- P. OPEN PLAZA
- Q. GUARD POST
- R. BIN CENTRE

CHUAN PARK

Common Facilities – Poolside Walk & Cabanas



Artist's Impression

CHUAN PARK

Common Facilities – Poolside Walk & Cabanas



Artist's Impression

CHUAN PARK

Common Facilities – Kids Adventure Water & Kids Club

SITE PLAN

0 5 10 20 40M

1ST STOREY

1. FUNCTION ROOM
2. LAWN
3. RESPITE DECK
4. RESIDENTIAL COURTYARD
5. 50M LAP POOL
6. WATER LOUNGE
7. POOLSIDE CABANAS & POOLSIDE WALK
8. OASIS POOL
9. OASIS DECK
10. RECESSED LOUNGES
11. RELAXATION DECK & RELAXATION LAWN
12. OASIS COVES & OASIS JACUZZI
13. GYM
14. HYDROTHERAPY COVE
15. KIDS ADVENTURE WATER
16. POOLSIDE PAVILIONS & POOLSIDE DECK
17. BOTANICAL DECK
18. KIDS PLAYGROUND
19. KIDS CLUB
20. KIDS WADING POOL
21. TENNIS COURT
22. GARDEN PAVILION
23. ORCHARD PAVILION
24. TRANQUIL ENCLAVE
25. FOREST PAVILION
26. FOREST SERENITY
27. RIVERSIDE PAVILIONS
28. RIVERSIDE PLAZA
29. ADULT FITNESS CORNER
30. ELDERLY FITNESS CORNER
31. YOGA DECK
32. FOYER LOBBY
33. CHANGING ROOMS
34. COMMON TOILET
35. VENTILATION SHAFT

ROOF LEVEL

36. WATER TANK

BASEMENT 1

- A. ENTRANCE
- B. ARRIVAL COURTYARD
- C. STUDY ROOM
- D. DROP-OFF
- E. BICYCLE PARKING LOTS
- F. GUARD HOUSE
- G. PEDESTRIAN SIDE GATES
- H. ELECTRICAL SUBSTATION
- I. COMMERCIAL UNIT
- J. GENERATOR SET
- K. MAINTENANCE / SERVICE ACCESS
- L. FIRE ENGINE ACCESS
- M. COMMON LIFT TO E-DECK
- N. COMMON TOILET
- O. MANAGEMENT OFFICE
- P. OPEN PLAZA
- Q. GUARD POST
- R. BIN CENTRE

CHUAN PARK

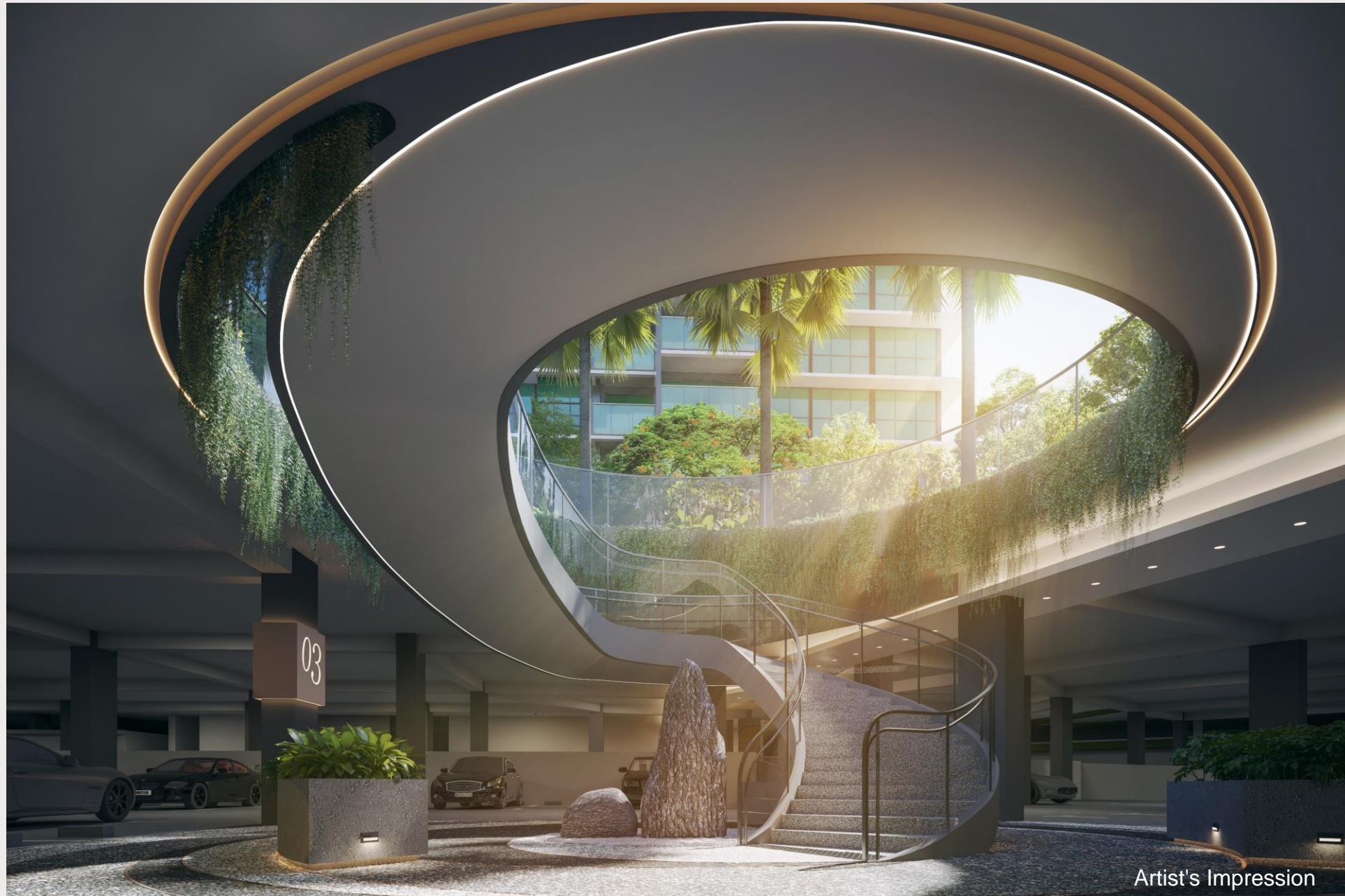
Common Facilities – Botanical Stairway



Artist's Impression

CHUAN PARK

Common Facilities – Botanical Stairway



Artist's Impression

CHUAN PARK

Common Facilities – Essence of Tropical Living in high-rise Sanctuary



CHUAN PARK
UNIT INTERIOR CONCEPT

CHUAN PARK Smart Home System



SMARTER HOME, BETTER LIFESTYLE

Enhance your lifestyle with cutting-edge technology integrated into your home. Featuring efficient smart systems, daily tasks are simplified and a life of ease is further elevated. Enjoy seamless convenience and enhanced security, all at your fingertips.



24/7 FACILITY BOOKING

Select and book your preferred facility any time.



DIGITAL LOCK

Use your phone to check if your door is securely locked.



FACE-TO-FACE GREETINGS

Welcome your guests through the lift lobby's video intercom system.



DIGITAL NEWS & E-FEEDBACK

Stay updated on important news and announcements and leave your feedback for the management.



CHUAN PARK

SHOW UNIT CONCEPT

Thank you